

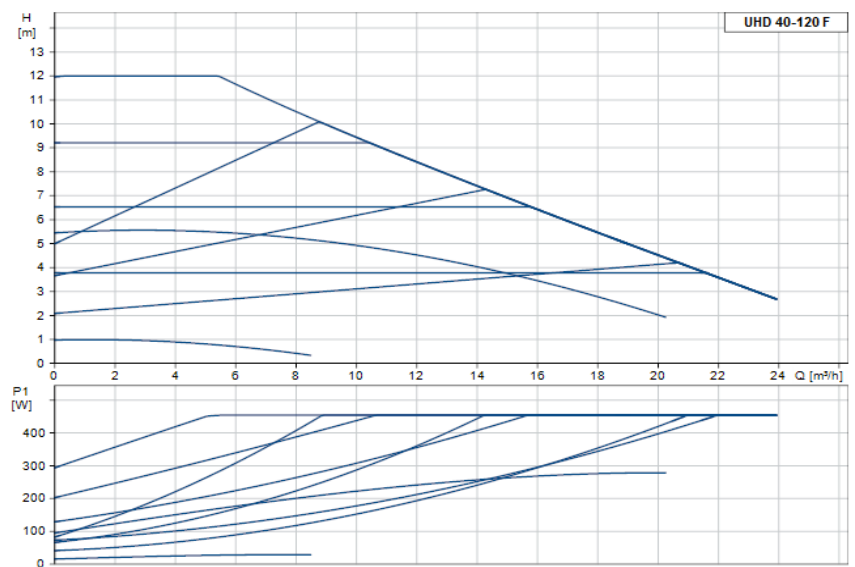
UHD 40-120F



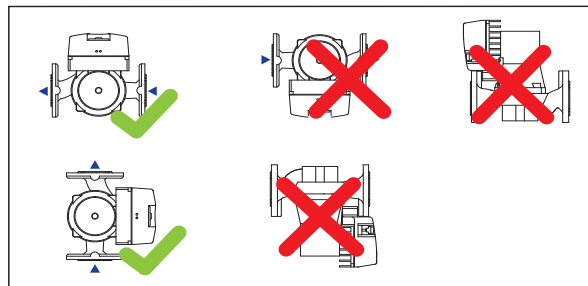
Ix230 V, 50Hz, IEC38	PI [W]	I [A]
Auto min.	30	0,20
Auto max.	450	2,00

Temperature Range (TF 110 - CEN 335-2-51)		
Water temp max. [°C]	90	110
Water temp min. [°C]	-10	-10
Ambient temp max. [°C]	40	30

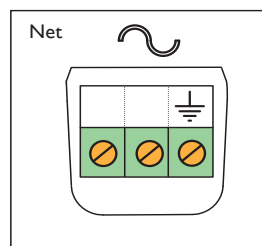
NPSH [bar]	80°C - 0,5	95°C - 1,5
Kg. (net)	18,6	



Installation



Electrical connection and Signals



Dimensions

